

Giro
Club armchair,
by Vincent Van Duysen

kettal

Club armchair

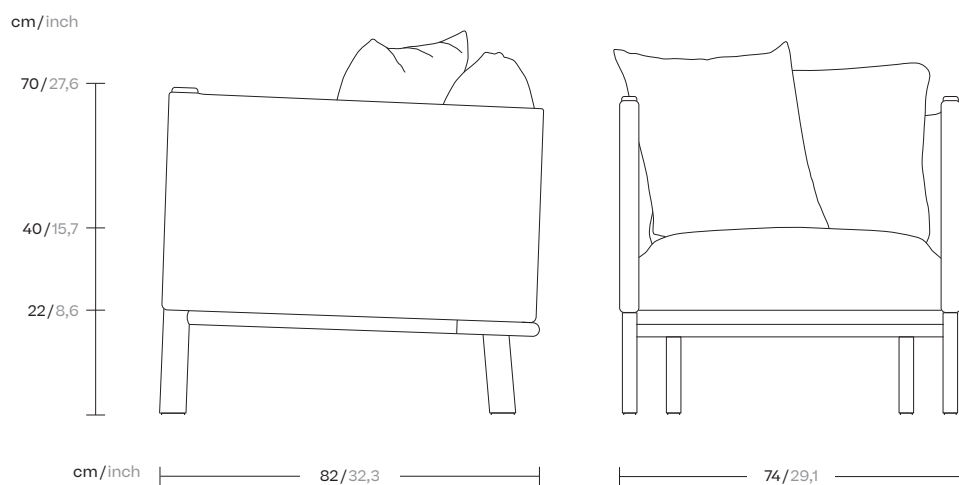
Designer
Vincent Van Duysen

Collection
Giro

Reference
KS7400300

1/3

Giro is a collection which can blend into interiors and exteriors due to its tactility and pure lines. In Giro, we have some variety of shapes, textures and materials (see the difference between the seating items and the coffee and side tables). And still all the items merge harmoniously together to create a warm, tactile and pleasant atmosphere.



kettal

Club armchair

Designer
Vincent Van Duysen

Collection
Giro

Reference
KS7400300

2/3

Materials

Teak
Teak A-Grade, Eco Friendly
Oeko-Tek

Stipa Fabric
Antioxy, Resist U.V, En-581-4, Easy
Clean

Terrain Elements
100% Fire Retardant Dyed
Acrylic, IMO FTP Code 2010
Part 8, Abrasion resistance
(Martindale) 60.000 cycles,
Fluorocarbon-free water
repellent finish Mildew, chlorine
and seawater resistant

Tonale Lino
100% Solution Dyed Acrylic, Fire
retardant IMO FTP Code 2010
Part 8

Tonale Boucle
60% Solution Dyed Acrylic 40%
polyester Fire retardant IMO FTP
Code 2010 Part 8

Frame Colour Options

Teak



Teak



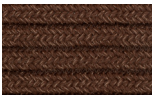
Cinnamon
Teak

Fabric Colour Options

Soga A



New Dawn
455



Chestnut
475

Fabric Colour Options

Soga B



Woodland
485



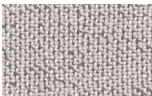
Ivy
465

Seat/Back Cushion

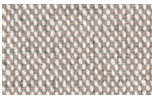
Tonale Lino



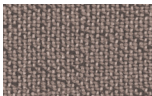
Alba
H51



Mist
H52



Mud Rain
H53



Haboob
H54



Sunstruck
H55

Seat/Back Cushion

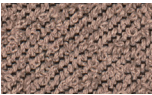
Tonale Boucle



Alba
H01



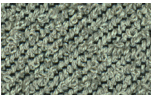
Haboob
H02



Afterglow
H03



Sunstruck
H04



Aurora
H05



Storm
H06

kettal

Club armchair

Designer
Vincent Van Duysen

Collection
Giro

Reference
KS7400300

3/3

Maintenance

Clean with mild soap using sponge or cloth. Be gentle while cleaning, do not scrub aggressively the fabric. Once cleaned please make sure you remove soap excess.
In case of aggressive stains clean with diluted household bleach.
Clean stains promptly. The longer it remains, more difficult will be to remove.

Once cleaned the fabric steam iron the fabric. Just use steam, be carefull NOT placing the iron directly in the fabric it will get damage.

Seat/Back Cushion

Terrain Laminate Elements



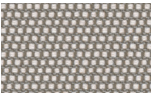
Charcoal
01L



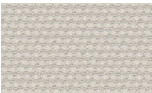
Cumulus
02L



Fog
09L



Porous Grey
08L



Snowcap
03L



Moonstone
07L



Karakum
06L



Cambium
12L



Raku
11L



Clove
13L



Desert Rose
14L



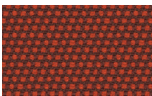
Pink Salt
15L



Pacific Dawn
16L



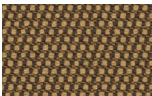
Acer
17L



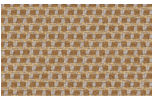
Firetail
18L



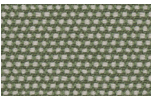
Glowing Ember
19L



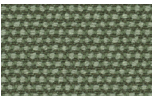
Tiger Eye
05L



Goldrush
04L



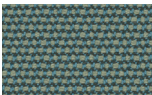
Sea Heart
22L



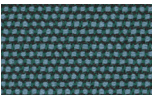
Heath
21L



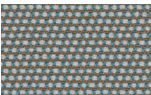
Peppercorn
20L



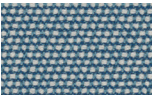
Rock Pool
23L



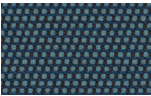
Tropic
24L



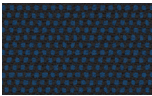
Skylark
25L



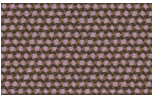
Nautica
26L



Blue Reef
27L



Cosmos
28L



Amethyst
29L

kettal