



## PARADIGMA

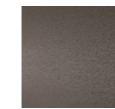
design Marco Lavit

Mirror Ø110cm consisting of a squared central part and four "half-moon" shaped external elements fixed to a 3 mm thick steel plate. Each element consists of an MDF panel with 2 mm thick metal insert and a steel frame covered with a 3 mm thick mirror or, only for the "half-moon" shaped elements, veneered in wood.

Rear frame in MDF 25mm lacquered matt black with integrated hooking and wall adjustment system. Metal parts painted with burnished epoxy powder finishing.

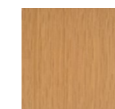
Veneered parts available in natural oak and charcoal-dyed oak. Mirror can be accessorised with a solid oak shelf and/or vase, which can be placed and fixed along the rail between the central element and the lunettes through magnetic details integrated in the accessories; the parts of the accessories in contact with the mirror parts are covered in felt.

### Structure

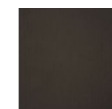


Burnished  
Painted Steel

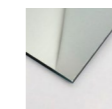
### "Half-Moon" External Element



Natural Oak

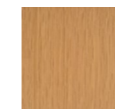


Charcoal-dyed  
Oak

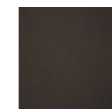


Mirrored Glass

### Shelf and Vase



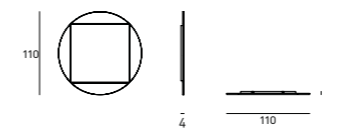
Natural Oak



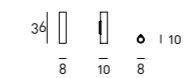
Charcoal-dyed  
Oak

### Technical Drawing

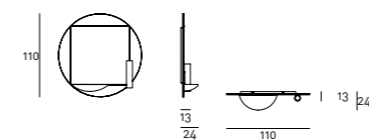
Mirror



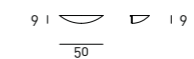
Vase



Mirror with accessories



Shelf



### Note

Notes for accessories with magnets:

- Do not place the magnets near to heat sources which could ruin the magnetic characteristics even permanently (do not exceed temperatures above 80°);
- The use of magnets is particularly contraindicated for Pacemaker wearers.
- The shelf cannot be placed in the upper joint. The vase cannot be placed in the upper and lower joints.

