

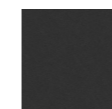


GRAFT

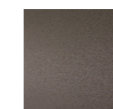
design David Lopez Quincoces

Series of rectangular or square dining tables consisting of a top in "sandwich" of MDF and beech blockboard (perimeter only) pressed and glued together, with embedded a 20mm thick Doluflex panel, to which are attached steel plates for mounting the legs made of extruded aluminum, CNC machined, with screwed stainless-steel pins for fixing to the top. Steel and aluminum parts finished with epoxy powder coating in gunmetal grey or burnished color. Top available veneered in Stone Oak®, natural or charcoal-dyed oak with water-based varnish, or multilaminar Striped Grey wood veneer with acrylic varnish. Floor support secured by plastic feet.

Legs



Steel with
Gunmetal Grey
Coating

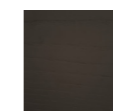


Burnished
Painted Steel

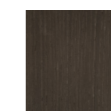
Top



Natural Oak



Charcoal-dyed
Oak



Stone Oak®



Striped Grey

Notes

Stone Oak®: this wood owes its particular coloring to an entirely natural process. Because of this, some slabs may look more brown than others. Our commitment is to provide you a high quality product; any differences in color should not be considered as defects.

Striped Grey: it is a decorative multilaminar wood veneer, always finished with a transparent acrylic painting, which features exclusive patterns reproducing the natural characteristics of wood. We would like to remind you that, being a natural and living wooden material, it may present non-homogeneous colour shades, which are peculiarities of the material itself.

On request, an additional protective (acrylic solvent) painting is available for the Stone Oak® finishing only. It should be noted that this additional coating slightly changes the natural color and texture of the surface. Although this supplementary painting increases the surface resistance, it is still a natural material; therefore small superficial stains, due to oil or other substances, have to be promptly removed, before being absorbed in depth by the wood. Thus, we recommend regular care and maintenance.

Technical Drawings
Table cm.300x100 h.73

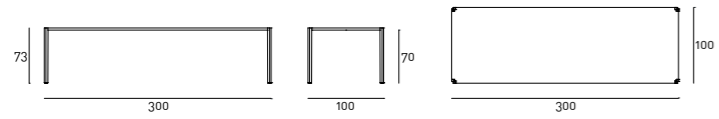


Table cm.260x100 h.73

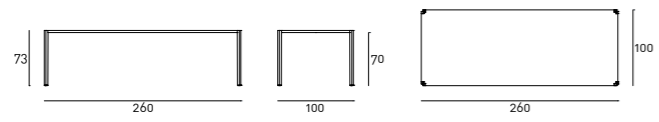


Table cm.220x100 h.73

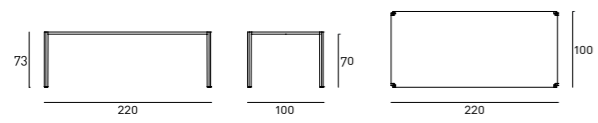


Table cm.180x180 h.73

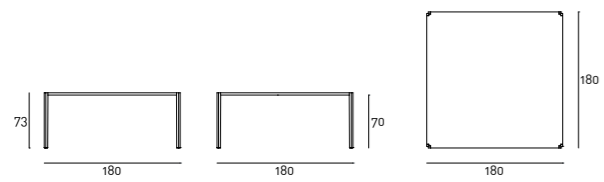


Table cm.160x160 h.73

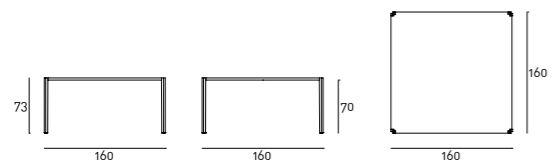


Table cm.140x140 h.73

