



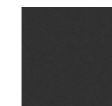
## Oolong

design Piero Lissoni

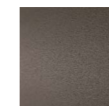
Swivel armchair with steel frame embedded in cold-expanded polyurethane foam with differentiated densities polyurethane foam insert. Covering in 100% polyether thermally bonded onto a polyamide velveteen backing and needle punched, resinated, non-woven polyester fibre, paired with a polyamide velveteen backing. Base in 20mm thick sheet steel, CNC machined, and Ø50mm drawn tube with inserted swivel return mechanism, with epoxy powder coating burnished colour or gunmetal grey. Floor support secured by PVC supports with interchangeable feet

(black PVC or felt) depending on the floor.  
Fabric or leather upholstery attached with clip profile and fully removable by invisible zippers and Velcro straps.  
Seat depth 48 cm.

### Base



Steel with  
Gunmetal Grey  
Coating



Burnished  
Painted Steel

### Technical Drawings



### Notes

This product can only be upholstered with the following fabrics/leathers in the collection; any velvet is not suitable as a covering.

- |                     |                         |
|---------------------|-------------------------|
| - 1a Amelia         | - 19a Alabama           |
| - 2a Morris         | - 20 Tosca              |
| - 3 Magnolia        | - 22 Fiore 1524         |
| - 4 Khali           | - 22 Rombo Rilievo 1524 |
| - 6 River           | - 22 Sabbia 15          |
| - 7a Lampedusa      | - 22 Sabbia 107         |
| - 10a Mira          | - 26 Divina 3           |
| - 14 Mikado         | - 33 Pelle Nabuk        |
| - 15a Fashion 23/15 | - 34a Pelle Florence    |
| - 15a Fashion 29/10 | - 35 Pelle New Scotland |
| - 15a Fashion 29/15 | - 38a Pelle Seta        |
| - 16a Mirage        | - 39 Pelle Must         |
| - 17 Panama         | - 42 Pelle Natural      |
| - 18 Fes            | - 44a Pelle Cuoietto    |
| - 18 Tan Tan        | - 45 Pelle Mandorlo     |
| - 19 Anversa        | - 46 Pelle Teak         |







